

Online appendix for
Dynamics of the inner elite in dictatorships:
Evidence from North Korea

Appendix Table 2. Summary statistics of the elite network, 2012-2015

	2012	2013	2014	2015*	Change (%) 2012-2014
<i>Number of inspection visits</i>	56	117	108	22	92.9
<i>Total number of elites in sample</i>	88	88	88	88	-
<i>Number of elites tied to Kim Jong-un</i>	41	38	25	10	-39.0
<i>Average number of elites per visit</i>	5.7	3.8	3.4	3.2	-40.4
<i>Average number of visits per elite</i>	7.8	11.7	14.5	7.1	85.9
<i>Average number of visits per elite (percent of total)</i>	13.9	10.0	13.4	32.3	
<i>Average number of co-occurrences per elite</i>	12.0	10.4	3.8	0.7	-68.3
<i>Network density</i>	0.138	0.119	0.044	0.008	-68.1

* Partial calendar year, January-June.

Appendix Table 3. MLE parameter estimates for STERGM of North Korean elite, 2012-2015 using quarterly data (T = 14)

<i>Parameter</i>	<i>Pr(Tie formation)</i>		<i>Pr(Tie dissolution)</i>	
	Coef.	(SE)	Coef.	(SE)
Edges	-4.407	(0.045)***	-0.885	(0.066)***
Triangle	0.277	(0.008)***	0.183	(0.008)***
Concurrent			-1.071	(0.199)***

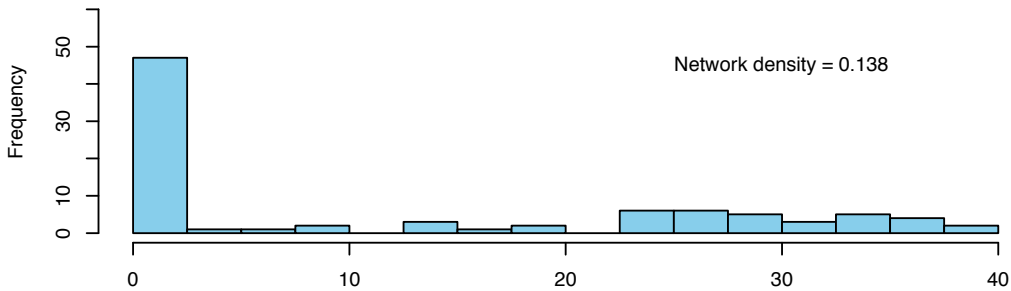
Significance levels: 0.05 , 0.01** , 0.001****

Appendix Table 4. Current visits as a function of past visits, 2012-2015

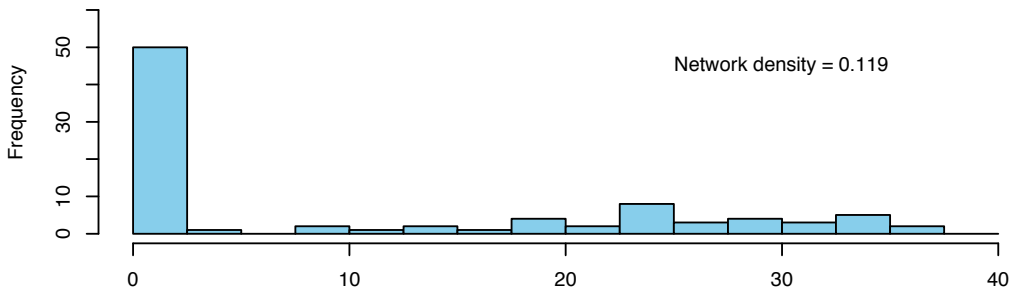
Dependent variable:		
	visits	
	OLS (1)	Poisson (2)
lagvisits	-0.354*** (0.077)	-0.011*** (0.002)
Constant	4.869 (3.484)	1.252*** (0.316)
Observations	262	262
R2	0.684	
Adjusted R2	0.529	
Log Likelihood		-361.686
Akaike Inf. Crit.		897.373
Residual Std. Error	6.007 (df = 175)	
F Statistic	4.406*** (df = 86; 175)	
Note: *p<0.1; **p<0.05; ***p<0.01		

Appendix Figure 3. Distribution of network ties of North Korean elites, 2012-2014

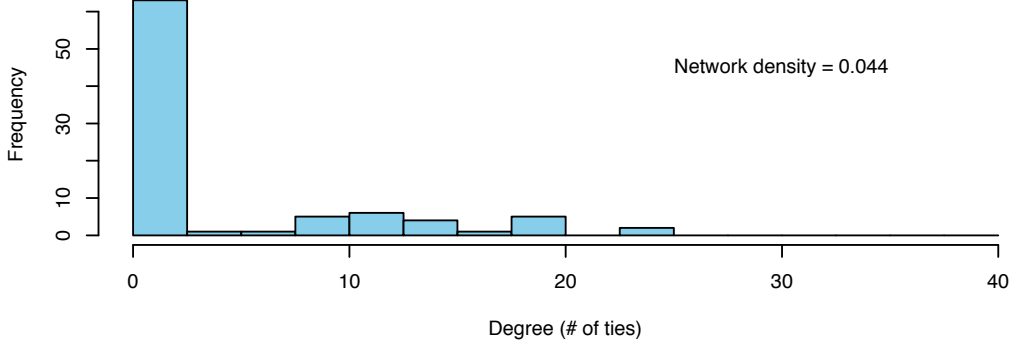
2012



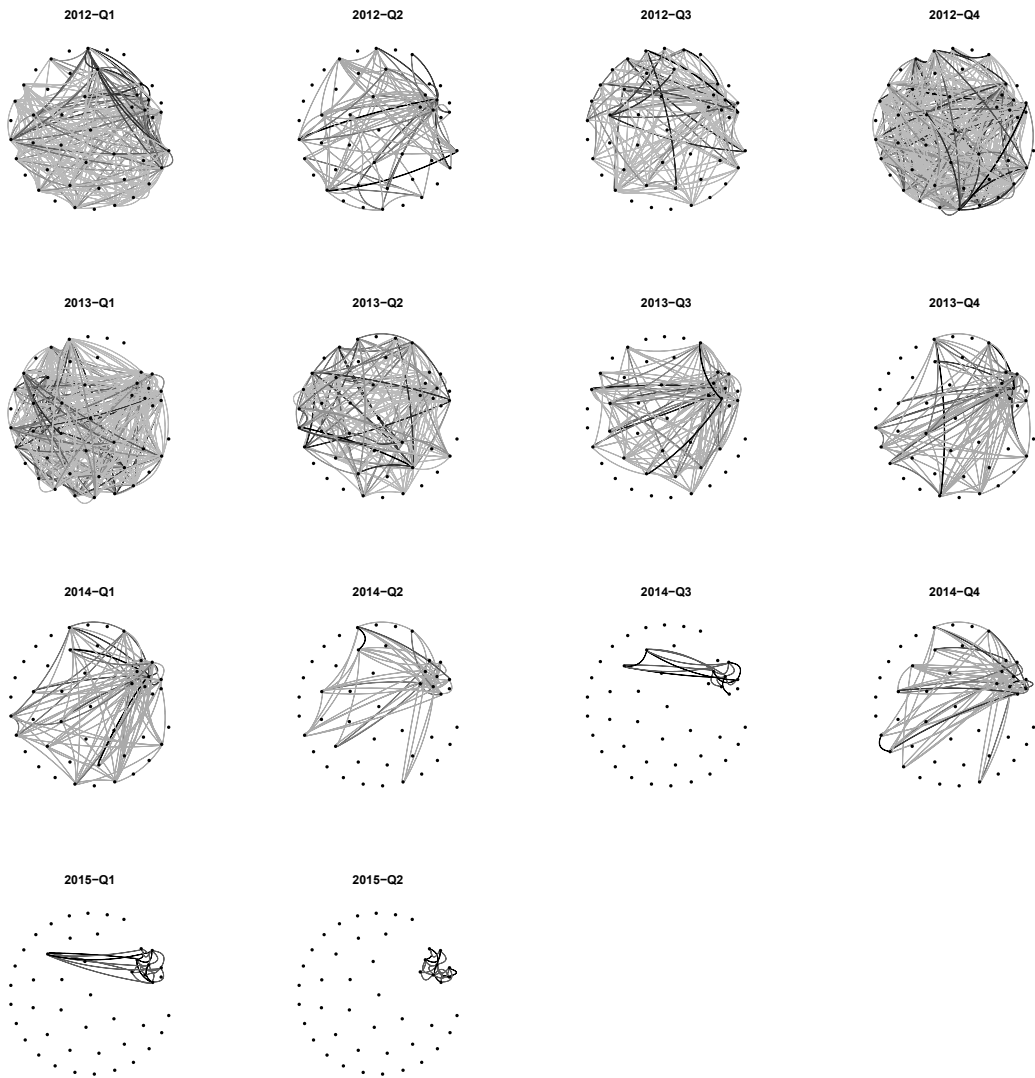
2013



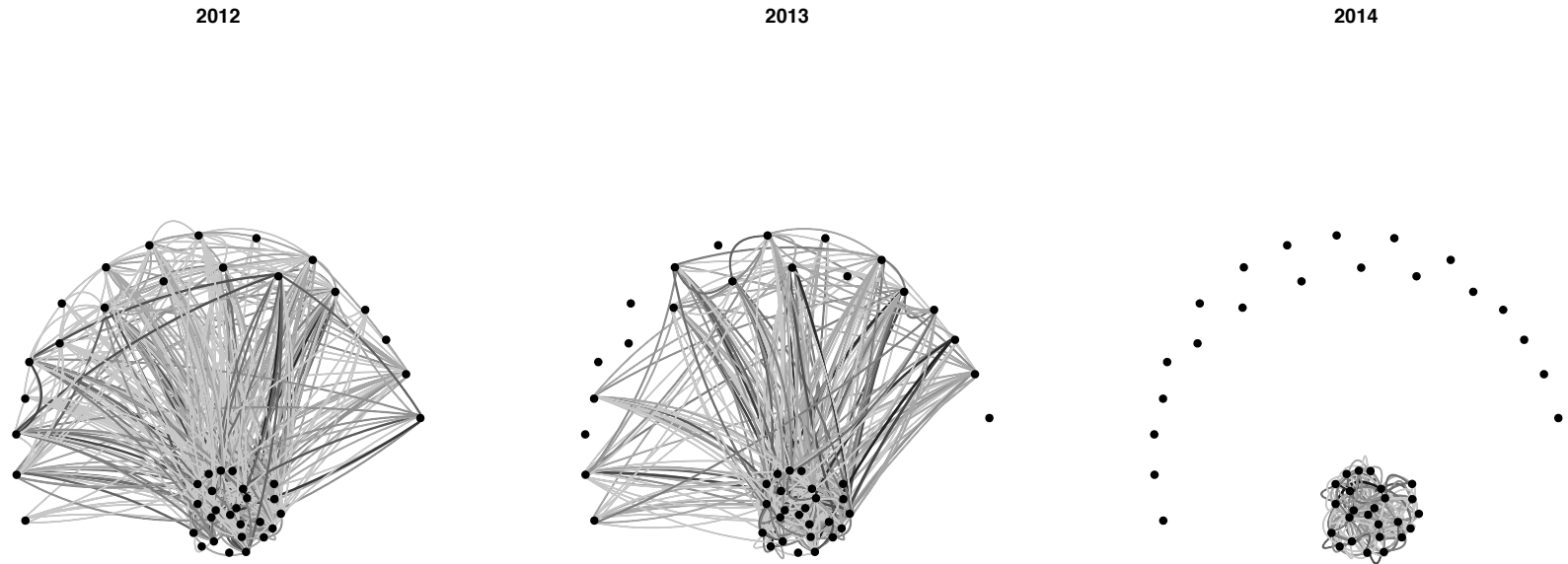
2014



Appendix Figure 4. North Korean elite network, 2012-2015 by quarter

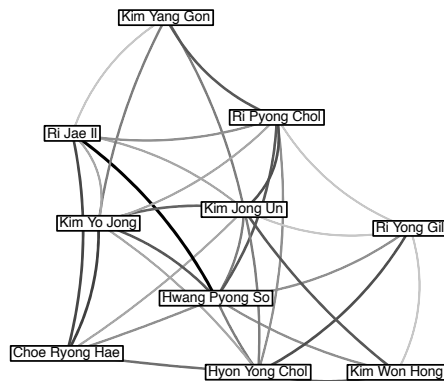


Appendix Figure 5: North Korean elite co-occurrence network, 2012-2014



Note: Figure produced with the statnet package in R using the “Kamadakawai” vertex placement algorithm fixed across networks based on the positioning in the 2014 network. Curved lines between points represent the existence of a tie (co-occurrence), with shading indicating intensity of ties (darker lines correspond to more frequent co-occurrences). Kim Jong-un is placed at the center of each network.

Appendix Figure 6: Labeled network, first half 2015



Note: Figure produced with the statnet package in R using the “Kamadakawai” vertex placement algorithm. Isolates for the network are not shown. See notes from Figure 3 for further detail.

Appendix Figure 7. Duration of inclusion in winning coalition (Kaplan-Meier Survival)

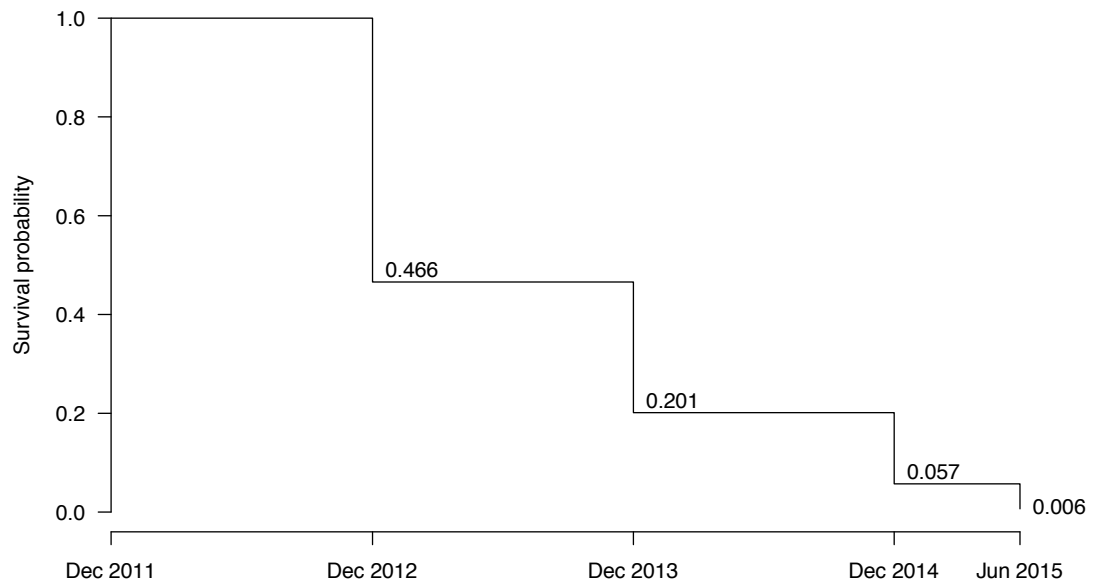


Figure 8. Cumulative share of ties, comparison over time

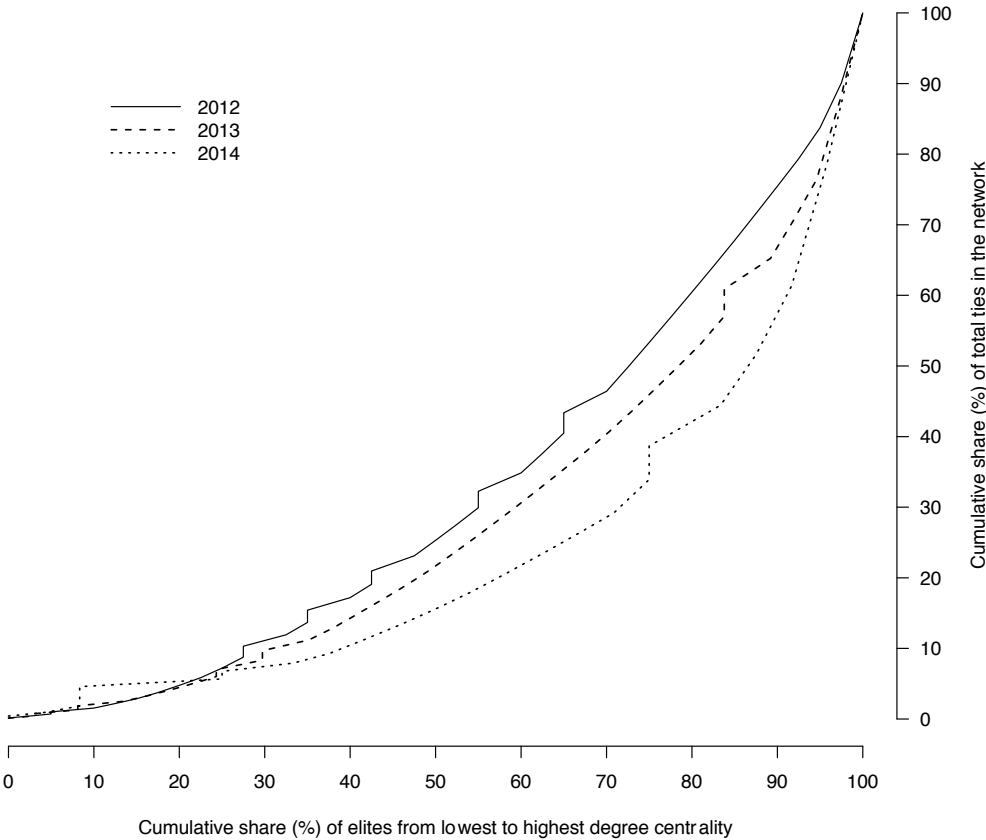


Figure 9. Co-attendance per event per elite from 2012 to 2015

